



ELEMENT	LEDER D	LEDER R	LEDER S	STOF S1	STOF S2 + L60	STOF S3
Lazio (open naad)	€ 638	€ 662	€ 692	€ 524	€ 554	€ 638

Zenato (geknepen naad)

Model lazio zonder wieltjes is model lazaro

Voor de kleur anodic brown en de ral kleuren 1035 champagne/ 7022 umbra grey/ 1019 grau beige/

Model zenato zonder wieltjes is model zilly

9010 wit/ 9005 zwart geldt een meerprijs van: € 10 (p/stoel)

LAZIO - ZENATO



STITCHING



LAZIO
has an open seam
only available in leather

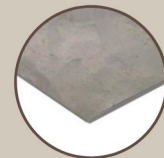


ZENATO
has a pinched seam
available in leather and fabrics

HEIGHT: 88 cm
DEPTH: 63 cm
WIDTH: 57 cm
SEAT DEPTH: 43 cm
SEAT HEIGHT : 53 cm
SEAT WIDTH: 51 cm
ARM HEIGHT: 69 cm

PRODUCT INFO

FRAME



steel

LEGS



black or RVS

FILLING

*BACK &
SEAT*



foam HR 43 fibre wool

Model Lazio without wheels is model Lazaro
Model Zenato without wheels is model Zilly

Caution: with the use of different moulds, the stitching of models in fabrics can be different from the stitching of the same models in leather.
All sizes are approximate, technical and stylistic changes and typing errors are reserved.

 **hetanker**
meubelindustrie